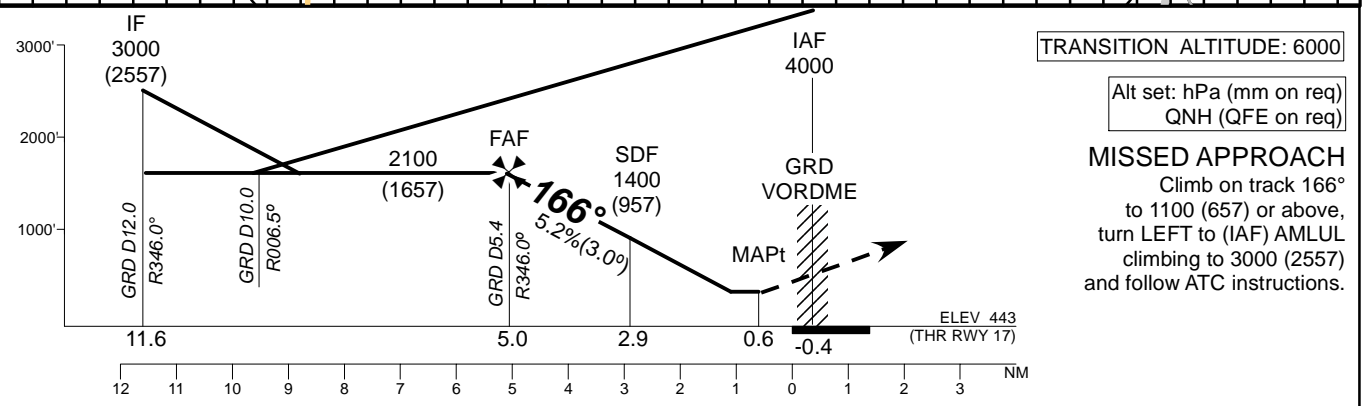
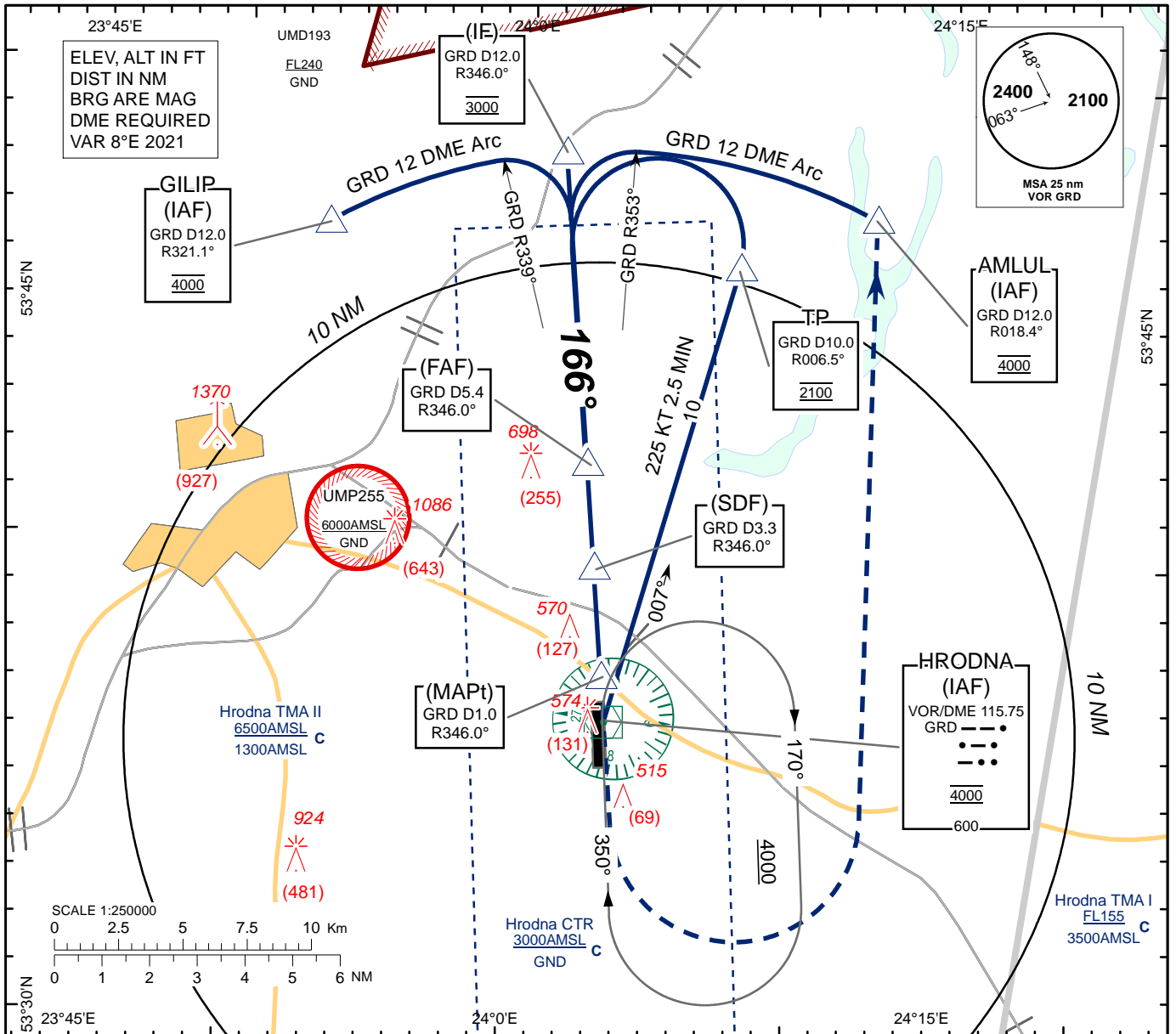


**INSTRUMENT  
APPROACH  
CHART - ICAO**

AERODROME ELEV 443  
HEIGHTS RELATED TO  
THR RWY 17 - ELEV 443

TWR	134.500
MET	135.025 EN 126.175 RUS

**HRODNA  
VOR  
RWY17**



TRANSITION ALTITUDE: 6000  
Alt set: hPa (mm on req)  
QNH (QFE on req)

**MISSED APPROACH**  
Climb on track 166°  
to 1100 (657) or above,  
turn LEFT to (IAF) AMLUL  
climbing to 3000 (2557)  
and follow ATC instructions.

CHANGE: Magnetic VAR.

Aircraft Category	A	B	C	D	GRD	6	5	4	3	2	1
Straight-in Approach OCA(H)	820(380)				DIST THR	5.6	4.6	3.6	2.6	1.6	0.6
					ALTITUDE	2100	1960	1650	1330	1010	700
					HEIGHT	(1657)	(1517)	(1207)	(887)	(567)	(257)
Circle - to - land	900(450)	940(500)	1040(600)	1140(690)	Timing not authorized for defining the MAPt						
	GS	Kts	80	100	120	140	160	180			
	Desc.Rate(5.2%)	ft/min	421	527	632	737	843	948			

HRODNA  
VOR  
RWY 17

**AERONAUTICAL DATA TABULATION**

<b>VOR approach to RWY17 from GRD VOR/DME, AMLUL, GILIP, NEPUD</b>	
<b>Fix/point</b>	<b>Coordinates</b>
(IAF) AMLUL R 018.4° D12.0 GRD	534711N 0241221E
(IAF) GILIP R 321.1°D12.0 GRD	534644N 0235258E
(IF) R 346.0° D12.0 GRD	534821N 0240118E
(FAF) R 346.0° D5.4 GRD	534152N 0240224E
(SDF) R 346.0° D3.3 GRD	533942N 0240247E
(TP) R 006.5° D10.0 GRD	534605N 0240734E
GRD VOR/DME (IAF)	533627.5N 0240321.4E
(MAPt) R 346° D1.0 GRD	533724N 0240311E
THR RWY 17	533648.46N 0240311.36E